

GREENWAY PUBLIC SCHOOL UPGRADES AND NEW PRESCHOOL

DEPARTMENT OF EDUCATION

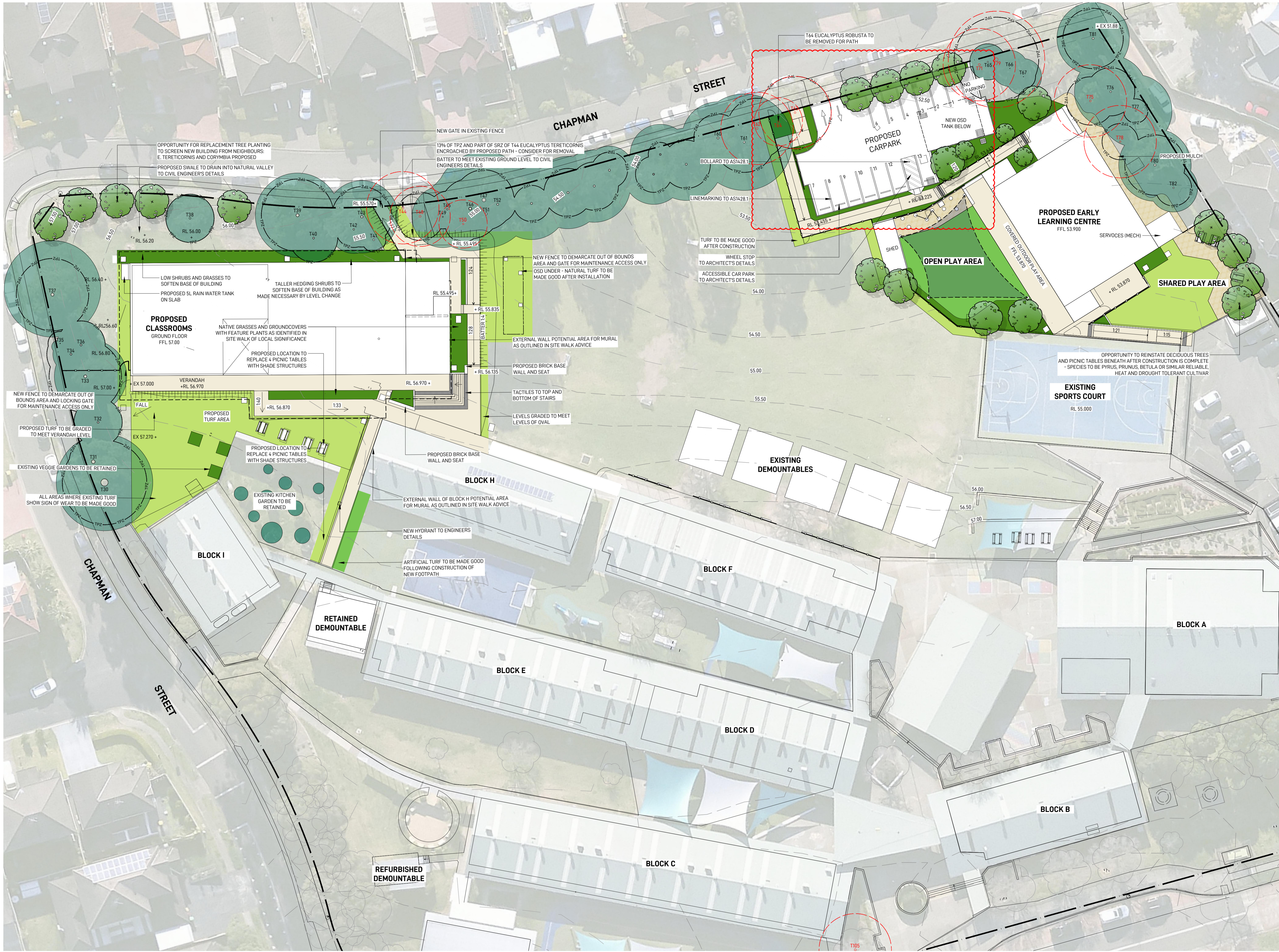
LANDSCAPE DOCUMENTATION

DRAWING REGISTER

DRAWING NUMBER	DRAWING NAME	SCALE / SIZE	REVISION
GPPS-GIL-00-00-DR-L-0001	COVER SHEET	-	H
GPPS-GIL-00-00-DR-L-3001	LANDSCAPE PLAN	1:300 @ A1	H
GPPS-GIL-00-00-DR-L-3002	LANDSCAPE PLAN - EARLY LEARNING	1:150 @ A1	G
GPPS-GIL-00-00-DR-L-3003	LANDSCAPE PLAN - FINAL STATE	1:300 @ A1	H
GPPS-GIL-00-00-DR-L-6001	PLANTING PLAN 1	1:150 @ A1	A
GPPS-GIL-00-00-DR-L-6002	PLANTING PLAN 2	1:150 @ A1	C
GPPS-GIL-00-00-DR-L-9001	LANDSCAPE DETAILS	1:20 @ A1	E

INDICATIVE PLANT PALETTE

CODE	BOTANICAL NAME	COMMON NAME	MATURE HEIGHT	NATIVE	INSTALL SIZE	SPACING	QUANTITY
REPLENISHMENT TREES							
BAC CIT	BACKHOUSIA CITRIODORA	LEMON SCENTED MYRTLE	3-5M	√	100L	AS SHOWN	2
BET NIG	BETULA NIGRA 'DURAHEAT'	RIVER BIRCH	8-10M		100L	AS SHOWN	6
COR MAC	CORYMBIA MACULATA	SPOTTED GUM	10-15M	√	100L	AS SHOWN	2
CUP ANA	CUPANIOPSIS ANACARDIOIDES	TUCKEROO	6-8M	√	100L	AS SHOWN	6
EUC TER	EUCALYPTUS TERETICORNIS	FOREST RED GUM	10-15M	√	100L	AS SHOWN	3
PYR CAL	PYRUS CALLERYANA 'CHANTICLEER'	ORNAMENTAL PEAR	8-10M		100L	AS SHOWN	3
SHRUBS							
ACM SMI	ACMENA SMITHII	LILLY PILLY	2-5M	√	300MM	AS SHOWN	43
BAN BIR	BANKSIA 'BIRTHDAY CANDLES'	HAIRPIN BANKSIA	1M	√	200MM	AS SHOWN	60
COR COA	CORREA 'COASTAL PINK'	WHITE CORREA	1 - 1.5M	√	200MM	AS SHOWN	37
DOR EXC	DORYANTHES EXCELSA	GYMEA LILY	1M	√	300MM	AS SHOWN	20
RHA SNO	RHAPHIOLEPIS 'SNOW MAIDEN'	INDIAN HAWTHORN	1.5M		300MM	AS SHOWN	57
SYZ AUS	SYZYGIUM AUSTRALE 'RESILIENCE'	LILY PILLY	2-4M	√	300MM	AS SHOWN	30
WES FRU	WESTRINGIA FRUTICOSA 'SMOKEY'	COAST ROSEMARY	1.2M	√	300MM	AS SHOWN	47
GROUNDCOVERS & GRASSES							
CAR AUS	CARPOBROTUS 'AUSSIE RAMBLER'	PIGFACE	0.2M	√	140MM	6 / M ²	302
DIA CAE	DIANELLA CAERULEA	BLUE FLAX LILY	0.6-0.8M	√	140MM	5 / M ²	325
HAR VIO	HARDENBERGIA VIOLACEA	FALSE SARSAPARILLA	0.3M	√	140MM	6 / M ²	302
HIB SCA	HIBBERTIA SCANDENS	GUINEA FLOWER	0.3M	√	140MM	6 / M ²	86
LIR JUS	LIRIOPE 'JUST RIGHT'	LILY TURF	0.5M		140MM	5 / M ²	204
LOM LON	LOMANDRA LONGIFOLIA	BASKET GRASS	0.5M	√	140MM	5 / M ²	276
PEN NAF	PENNISSETUM NAFRAY	SWAMP FOXTAIL GRASS	0.6M	√	140MM	5 / M ²	101
POA ESK	POA 'ESKDALE BLUE'	BLUE TUSsock GRASS	0.45M	√	140MM	6 / M ²	109
TRA ASI	TRACHELOSPERMUM ASIATICUM	ASIATIC JASMINE YELLOW STAR	0.15M		140MM	6 / M ²	388
WES MUN	WESTRINGIA 'MUNDI'	DWARF COASTAL ROSEMARY	0.4M	√	140MM	5 / M ²	9



LEGEND

- FFL 00.00 FINISHED FLOOR LEVEL
- + EX 00.00 EXISTING SPOT LEVEL
- + RL 00.00 PROPOSED SPOT LEVEL
- PROPOSED FENCING
- TPZ TREE PROTECTION ZONE LINE
- - - LINE OF BUILDING OVER
- PROPOSED GARDEN BED - REFER TO GPPS-GIL-00-00-DR-L-0001 FOR INDICATIVE SPECIES LIST
- PROPOSED TURF
- EXISTING TREES TO BE RETAINED - REFER TO ARBORIST'S REPORT PREPARED BY LAURENCECO 19.12.23
- EXISTING TREES TO BE REMOVED
- PROPOSED TREES

EXISTING TREE SCHEDULE

ID	BOTANICAL NAME (COMMON NAME)	EXISTING HEIGHT	PROPOSED ACTION
T30	CORYMBIA MACULATA (SPOTTED GUM)	18M	RETAINED
T31	CORYMBIA MACULATA (SPOTTED GUM)	12M	RETAINED
T32	OLEA EUROPAEA (EUROPEAN OLIVE)	4M	RETAINED
T33	EUCALYPTUS TERETICORNIS (FOREST RED GUM)	15M	RETAINED
T34	MELALEUCA STYPHELOIDES (PRICKLY LEAVED PAPERBARK)	5M	RETAINED
T35	EUCALYPTUS TERETICORNIS (FOREST RED GUM)	5M	RETAINED
T36	CASUARINA GLAUCA (SWAMP SHE OAK)	12M	RETAINED
T37	CORYMBIA MACULATA (SPOTTED GUM)	17M	RETAINED
T38	CASUARINA GLAUCA (SWAMP SHE OAK)	16M	RETAINED
T39	EUCALYPTUS SP. (GUM TREE)	16M	RETAINED
T40	CASUARINA GLAUCA (SWAMP SHE OAK)	15M	RETAINED
T41	CASUARINA GLAUCA (SWAMP SHE OAK)	6M	RETAINED
T42	CASUARINA GLAUCA (SWAMP SHE OAK)	15M	RETAINED
T43	CASUARINA GLAUCA (SWAMP SHE OAK)	14M	RETAINED
T44	EUCALYPTUS TERETICORNIS (FOREST RED GUM)	17M	REMOVE
T45	EUCALYPTUS TERETICORNIS (FOREST RED GUM)	14M	RETAINED
T46	EUCALYPTUS TERETICORNIS (FOREST RED GUM)	18M	RETAINED
T47	EUCALYPTUS TERETICORNIS (FOREST RED GUM)	20M	RETAINED
T48	EUCALYPTUS SP. (GUM TREE)	6M	REMOVE
T49	CASUARINA GLAUCA (SWAMP SHE OAK)	12M	RETAINED
T50	CASUARINA GLAUCA (SWAMP SHE OAK)	12M	REMOVE
T56	EUCALYPTUS ROBUSTA (SWAMP MAHOGANY)	7M	RETAINED
T57	CASUARINA GLAUCA (SWAMP SHE OAK)	14M	RETAINED
T58	CASUARINA GLAUCA (SWAMP SHE OAK)	10M	RETAINED
T59	CASUARINA GLAUCA (SWAMP SHE OAK)	15M	RETAINED
T60	CASUARINA GLAUCA (SWAMP SHE OAK)	16M	RETAINED
T61	CASUARINA GLAUCA (SWAMP SHE OAK)	17M	RETAINED
T62	CASUARINA GLAUCA (SWAMP SHE OAK)	15M	REMOVE
T63	EUCALYPTUS TERETICORNIS (FOREST RED GUM)	18M	REMOVE
T64	EUCALYPTUS ROBUSTA (SWAMP MAHOGANY)	6M	REMOVE
T65	CASUARINA GLAUCA (SWAMP SHE OAK)	8M	RETAINED
T67	CASUARINA GLAUCA (SWAMP SHE OAK)	8M	RETAINED
T68	CASUARINA GLAUCA (SWAMP SHE OAK)	8M	RETAINED
T69	CASUARINA GLAUCA (SWAMP SHE OAK)	8M	RETAINED
T70	CASUARINA GLAUCA (SWAMP SHE OAK)	8M	RETAINED
T71	CASUARINA GLAUCA (SWAMP SHE OAK)	14M	REMOVE
T72	CASUARINA GLAUCA (SWAMP SHE OAK)	14M	RETAINED
T73	CASUARINA GLAUCA (SWAMP SHE OAK)	14M	RETAINED
T74	CASUARINA GLAUCA (SWAMP SHE OAK)	14M	RETAINED
T75	CASUARINA GLAUCA (SWAMP SHE OAK)	14M	REMOVE
T76	CASUARINA GLAUCA (SWAMP SHE OAK)	14M	RETAINED
T77	CASUARINA GLAUCA (SWAMP SHE OAK)	14M	RETAINED
T78	CASUARINA GLAUCA (SWAMP SHE OAK)	14M	REMOVE
T79	CASUARINA GLAUCA (SWAMP SHE OAK)	20M	REMOVE
T80	CASUARINA GLAUCA (SWAMP SHE OAK)	15M	RETAINED
T81	ARAUACARIA CUNNINGHAMII	17M	RETAINED
T82	MELALEUCA DECORA (WHITE FEATHER HONEYMYRTLE)	6M	RETAINED
T105	MALUS SP. (CRAB APPLE)	5M	REMOVE

EXISTING TREE HEIGHTS AND SPECIES SOURCED FROM ARBORICULTURAL IMPACT ASSESSMENT & TREE PROTECTION REPORT BY LAURENCECO DATED 25TH MARCH 2025

LANDSCAPE ARCHITECT
GROUND INK
 LANDSCAPE ARCHITECTS
 SUITE 19, 56 NERIDAH ST, CHATSWOOD NSW 2067 PH. (02) 9411 3279
 WWW.GROUNDINK.COM.AU ABN 55 163 025 456 ACN 163 025 456
 © GROUND INK PTY LTD THIS DESIGN AND DRAWING IS PROTECTED BY COPYRIGHT.

NOTE
 VERIFY ALL DIMENSIONS ON SITE BEFORE COMMENCING WORK. REPORT ALL DISCREPANCIES TO LANDSCAPE ARCHITECT PRIOR TO CONSTRUCTION. FIGURED DIMENSIONS TO BE TAKEN IN PREFERENCE TO SCALED DRAWINGS. ALL WORK IS TO CONFORM TO RELEVANT AUSTRALIAN STANDARDS AND OTHER CODES AS APPLICABLE. LOCATION OF UNDERGROUND SERVICES TO BE PROVEN ON SITE AND PROTECTED IF NECESSARY PRIOR TO CONSTRUCTION. DIAL BEFORE YOU DIG. PLANT SPECIES AND QUANTITIES SHOWN ARE INDICATIVE ONLY AND ARE SUBJECT TO CHANGE BASED ON FUTURE PROJECT REQUIREMENTS.

ISSUE	DATE	DESCRIPTION	DRAWN	CHECKED
A	03.12.24	ISSUE FOR COORDINATION	AG	RL
B	05.12.24	ISSUE FOR COORDINATION	AG	RL
C	19.12.24	100% SCHEMATIC	AG	RL
D	23.01.25	ISSUE FOR PCG COORDINATION	AG	RL
E	28.03.25	ISSUE FOR TENDER	QN	RL
F	31.03.25	ISSUE FOR TENDER	QN	RL
G	22.04.25	ISSUE FOR TENDER	RT	RL
H	23.04.25	ISSUE FOR TENDER	QN	RL

DRAWING TITLE

LANDSCAPE PLAN

DRAWING NUMBER
GPPS-GIL-00-00-DR-L-3001

PROJECT
GREENWAY PARK PUBLIC SCHOOL
 WYATTVILLE DRIVE, CARNES HILL, NSW 2171

SCALE 1:300 @ A1
 0 2 4 6 8 10M

REV
H



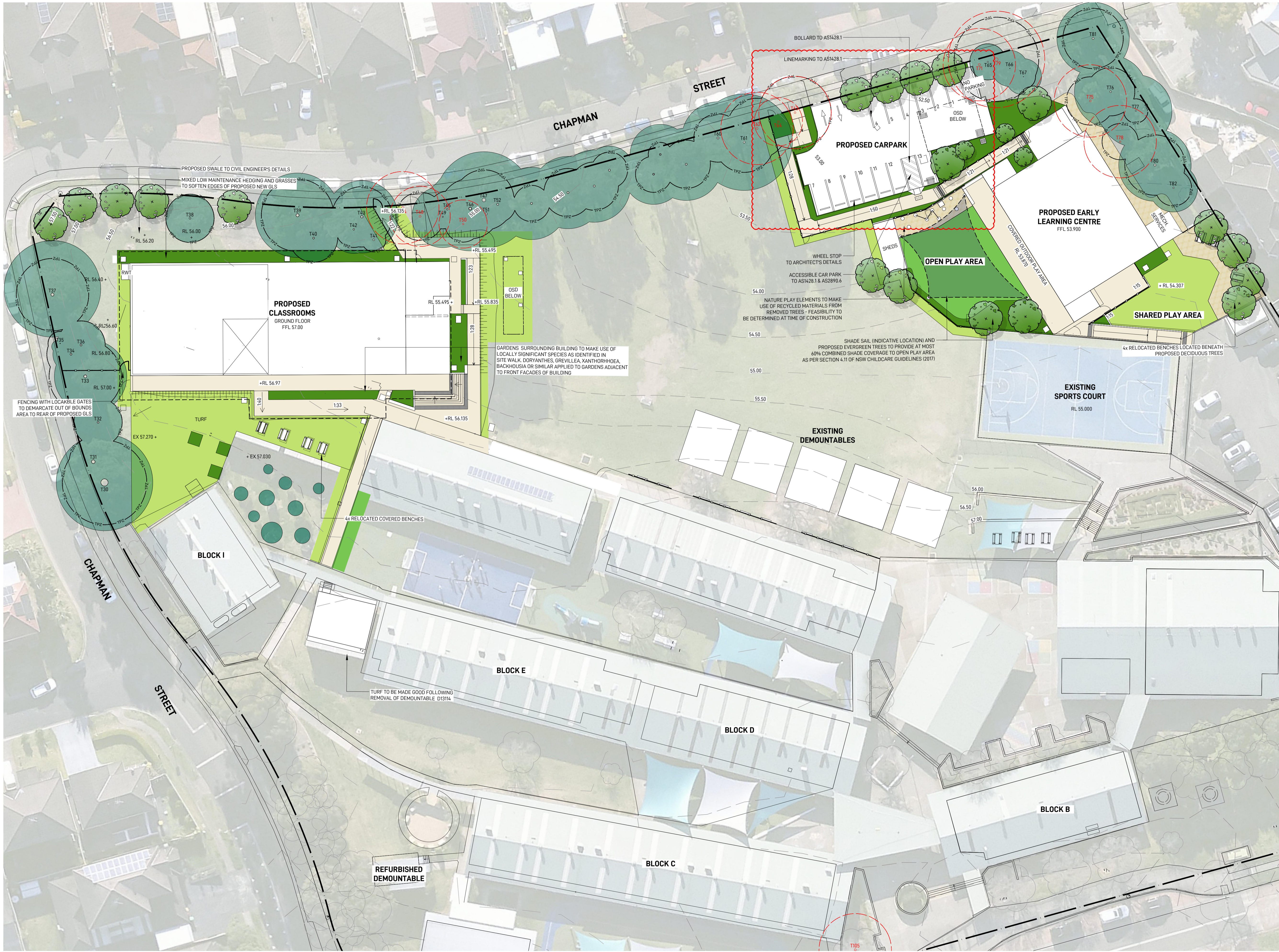
- LEGEND**
- FFL 00.00 FINISHED FLOOR LEVEL
 - + EX 00.00 EXISTING SPOT LEVEL
 - + RL 00.00 PROPOSED SPOT LEVEL
 - PROPOSED FENCING
 - TPZ — TREE PROTECTION ZONE LINE
 - - - LINE OF BUILDING OVER
 - PROPOSED GARDEN BED - REFER TO GPPS-GIL-00-00-DR-L-0001 FOR INDICATIVE SPECIES LIST
 - PROPOSED TURF
 - EXISTING TREES TO BE RETAINED - REFER TO ARBORIST'S REPORT PREPARED BY LAURENCECO 19.12.23
 - EXISTING TREES TO BE REMOVED
 - PROPOSED TREES

NOTE
 VERIFY ALL DIMENSIONS ON SITE BEFORE COMMENCING WORK. REPORT ALL DISCREPANCIES TO LANDSCAPE ARCHITECT PRIOR TO CONSTRUCTION. FIGURED DIMENSIONS TO BE TAKEN IN PREFERENCE TO SCALED DRAWINGS. ALL WORK IS TO CONFORM TO RELEVANT AUSTRALIAN STANDARDS AND OTHER CODES AS APPLICABLE. LOCATION OF UNDERGROUND SERVICES TO BE PROVEN ON SITE AND PROTECTED IF NECESSARY PRIOR TO CONSTRUCTION. DIAL BEFORE YOU DIG. PLANT SPECIES AND QUANTITIES SHOWN ARE INDICATIVE ONLY AND ARE SUBJECT TO CHANGE BASED ON FUTURE PROJECT REQUIREMENTS.

ISSUE	DATE	DESCRIPTION	DRAWN	CHECKED
A	03.12.24	ISSUE FOR COORDINATION	AG	RL
B	05.12.24	ISSUE FOR COORDINATION	AG	RL
C	19.12.24	100% SCHEMATIC	AG	RL
D	28.03.25	ISSUE FOR TENDER	QN	RL
E	31.03.25	ISSUE FOR TENDER	QN	RL
F	22.04.25	ISSUE FOR TENDER	RT	RL
G	23.04.25	ISSUE FOR TENDER	QN	RL

DRAWING TITLE

**LANDSCAPE PLAN
 EARLY LEARNING**



- LEGEND**
- 00.00 FINISHED FLOOR LEVEL
 - + EX 00.00 EXISTING SPOT LEVEL
 - + RELY PROPOSED SPOT LEVEL
 - PROPOSED FENCING
 - TPZ — TREE PROTECTION ZONE LINE
 - - - LINE OF BUILDING OVER
 - PROPOSED GARDEN BED - REFER TO GPPS-GIL-00-00-DR-L-0001 FOR INDICATIVE SPECIES LIST
 - PROPOSED TURF
 - EXISTING TREES TO BE RETAINED - REFER TO ARBORIST'S REPORT PREPARED BY LAURENCECO 19.12.23
 - EXISTING TREES TO BE REMOVED
 - PROPOSED TREES

LANDSCAPE ARCHITECT
GROUND INK
 LANDSCAPE ARCHITECTS
 SUITE 19, 56 NERIDA ST, CHATSWOOD NSW 2067 PH. (02) 9411 3279
 WWW.GROUNDINK.COM.AU ABN 55 163 025 456 ACN 163 025 456
 © GROUND INK PTY LTD THIS DESIGN AND DRAWING IS PROTECTED BY COPYRIGHT.

NOTE
 VERIFY ALL DIMENSIONS ON SITE BEFORE COMMENCING WORK. REPORT ALL DISCREPANCIES TO LANDSCAPE ARCHITECT PRIOR TO CONSTRUCTION. FIGURED DIMENSIONS TO BE TAKEN IN PREFERENCE TO SCALED DRAWINGS. ALL WORK IS TO CONFORM TO RELEVANT AUSTRALIAN STANDARDS AND OTHER CODES AS APPLICABLE. LOCATION OF UNDERGROUND SERVICES TO BE PROVEN ON SITE AND PROTECTED IF NECESSARY PRIOR TO CONSTRUCTION. DIAL BEFORE YOU DIG. PLANT SPECIES AND QUANTITIES SHOWN ARE INDICATIVE ONLY AND ARE SUBJECT TO CHANGE BASED ON FUTURE PROJECT REQUIREMENTS.

ISSUE	DATE	DESCRIPTION	DRAWN	CHECKED
A	03.12.24	ISSUE FOR COORDINATION	AG	RL
B	05.12.24	ISSUE FOR COORDINATION	AG	RL
C	19.12.24	100% SCHEMATIC	AG	RL
D	23.01.25	ISSUE FOR PCG COORDINATION	AG	RL
E	28.03.25	ISSUE FOR TENDER	QN	RL
F	31.03.25	ISSUE FOR TENDER	QN	RL
G	22.04.25	ISSUE FOR TENDER	RT	RL
H	23.04.25	ISSUE FOR TENDER	QN	RL

DRAWING TITLE

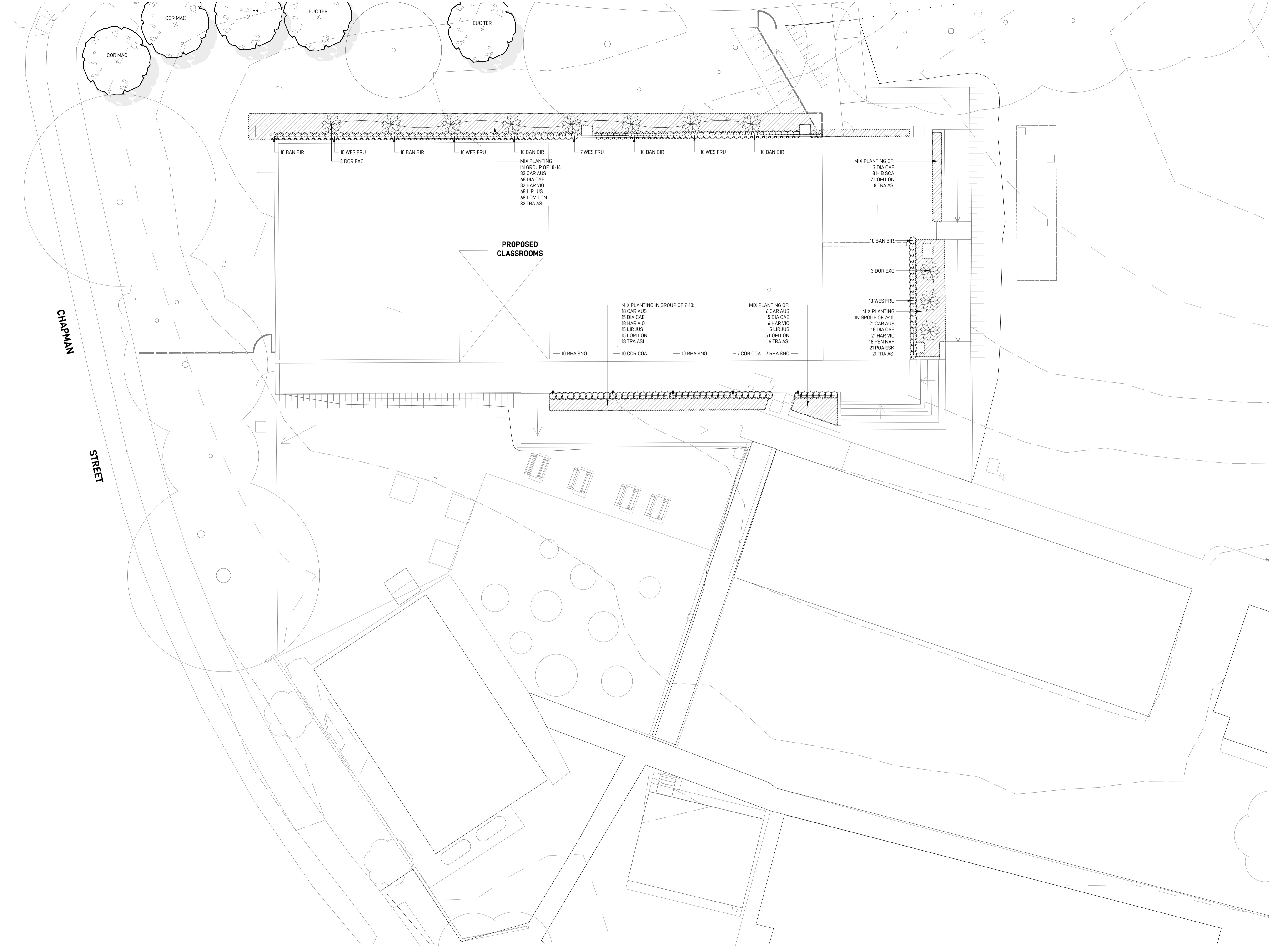
**LANDSCAPE PLAN
 FINAL STATE**

DRAWING NUMBER
GPPS-GIL-00-00-DR-L-3003

PROJECT
GREENWAY PARK PUBLIC SCHOOL
 WYATTVILLE DRIVE, CARNES HILL, NSW 2171

SCALE 1:300 @ A1
 0 2 4 6 8 10M

REV
H



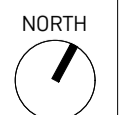
NOTE
 VERIFY ALL DIMENSIONS ON SITE BEFORE COMMENCING WORK. REPORT ALL DISCREPANCIES TO LANDSCAPE ARCHITECT PRIOR TO CONSTRUCTION. FIGURED DIMENSIONS TO BE TAKEN IN PREFERENCE TO SCALED DRAWINGS. ALL WORK IS TO CONFORM TO RELEVANT AUSTRALIAN STANDARDS AND OTHER CODES AS APPLICABLE. LOCATION OF UNDERGROUND SERVICES TO BE PROVEN ON SITE AND PROTECTED IF NECESSARY PRIOR TO CONSTRUCTION. DIAL BEFORE YOU DIG. PLANT SPECIES AND QUANTITIES SHOWN ARE INDICATIVE ONLY AND ARE SUBJECT TO CHANGE BASED ON FUTURE PROJECT REQUIREMENTS.

ISSUE	DATE	DESCRIPTION	DRAWN	CHECKED	DRAWING TITLE
A			QN	RL	
	28.03.25	ISSUE FOR TENDER			

PLANTING PLAN 1

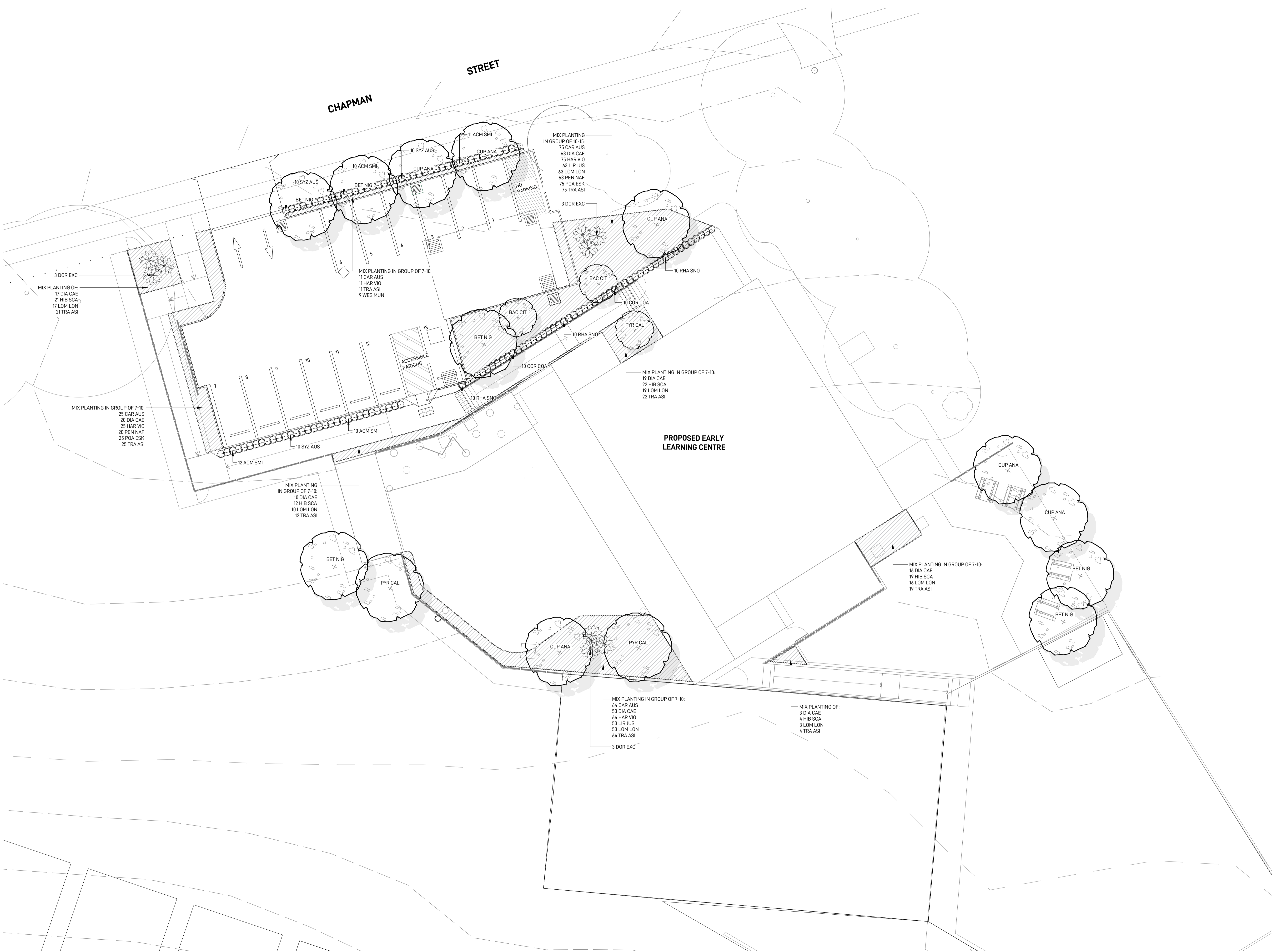
DRAWING NUMBER
GPPS-GIL-00-00-DR-L-6001

PROJECT
GREENWAY PARK PUBLIC SCHOOL
 WYATTVILLE DRIVE, CARNES HILL, NSW 2171



SCALE 1:150 @ A1
 0 1 2 3 4 5M

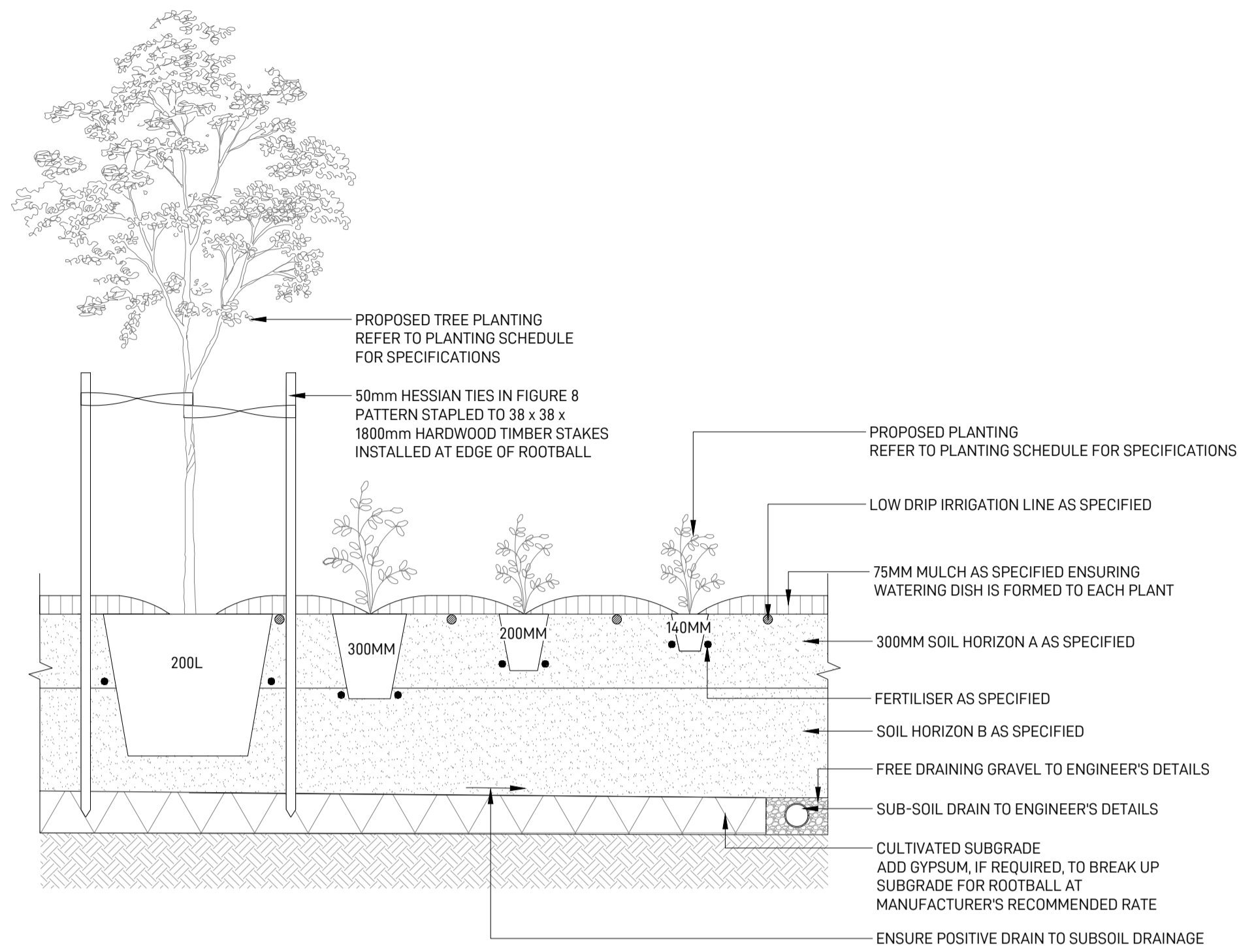
REV
A



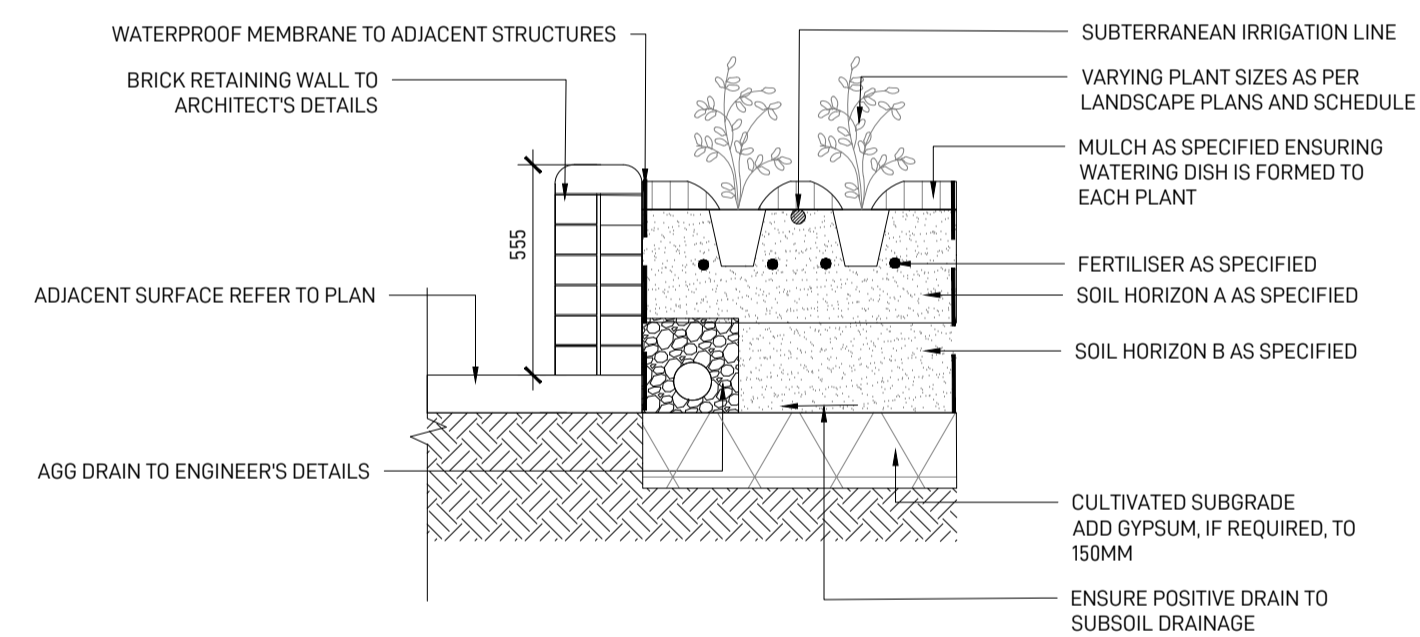
NOTE
 VERIFY ALL DIMENSIONS ON SITE BEFORE COMMENCING WORK. REPORT ALL DISCREPANCIES TO LANDSCAPE ARCHITECT PRIOR TO CONSTRUCTION. FIGURED DIMENSIONS TO BE TAKEN IN PREFERENCE TO SCALED DRAWINGS. ALL WORK IS TO CONFORM TO RELEVANT AUSTRALIAN STANDARDS AND OTHER CODES AS APPLICABLE. LOCATION OF UNDERGROUND SERVICES TO BE PROVEN ON SITE AND PROTECTED IF NECESSARY PRIOR TO CONSTRUCTION. DIAL BEFORE YOU DIG. PLANT SPECIES AND QUANTITIES SHOWN ARE INDICATIVE ONLY AND ARE SUBJECT TO CHANGE BASED ON FUTURE PROJECT REQUIREMENTS.

ISSUE	DATE	DESCRIPTION	DRAWN	CHECKED
A	28.03.25	ISSUE FOR TENDER	QN	RL
B	22.04.25	ISSUE FOR TENDER	RT	RL
C	23.04.25	ISSUE FOR TENDER	QN	RL

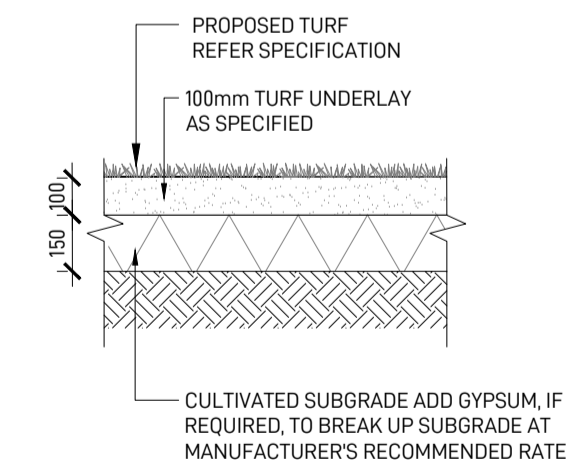
DRAWING TITLE
PLANTING PLAN 2



1 PLANTING ON GRADE
TYPICAL SECTION - SCALE 1:20



2 RAISED PLANTER
TYPICAL SECTION - SCALE 1:20



3 TURF
TYPICAL SECTION - SCALE 1:20

OUTLINE LANDSCAPE SPECIFICATION

GENERAL

MAINTENANCE SHALL MEAN THE CARE AND MAINTENANCE OF THE LANDSCAPE WORKS BY ACCEPTED HORTICULTURAL PRACTICE AS RECTIFYING ANY DEFECTS THAT BECOME APPARENT IN THE LANDSCAPE WORKS UNDER NORMAL USE. THE LANDSCAPE CONTRACTOR SHALL ATTEND THE SITE ON A WEEKLY BASIS TO MAINTAIN THE LANDSCAPE WORKS FOR THE FULL TERM APPROVED AT CC STAGE OF THE MAINTENANCE PERIOD (COMMENCING FROM PRACTICAL COMPLETION).

RUBBISH REMOVAL

DURING THE TERM OF THE MAINTENANCE PERIOD THE LANDSCAPE CONTRACTOR SHALL UNDERTAKE RUBBISH REMOVAL FROM THE SITE ON A WEEKLY BASIS TO ENSURE THE SITE REMAINS IN TIDY CONDITION.

WEED ERADICATION

WEED GROWTH THAT MAY OCCUR IN, PLANTED OR MULCHED AREAS IS TO BE REMOVED USING ENVIRONMENTALLY ACCEPTABLE METHODS I.E. NON-RESIDUAL GLYPHOSATE HERBICIDE, (E.G. 'ROUNDUP', APPLIED IN ACCORDANCE WITH THE MANUFACTURER'S DIRECTIONS) OR HAND WEEDING.

TREE REPLACEMENT

TREES SHALL SHOW SIGNS OF HEALTHY VIGOROUS GROWTH AND BE FREE FROM DISEASE AND NOT EXHIBIT SIGNS OF STRESS PRIOR TO HANDOVER TO THE CLIENT. ANY TREES OR PLANT THAT DIE OR FAIL TO THRIVE, OR ARE DAMAGED OR STOLEN WILL BE REPLACED. REPLACEMENT MATERIAL SHALL HAVE THE MAINTENANCE PERIOD EXTENDED IN ACCORDANCE WITH THE LANDSCAPE CONTRACT CONDITIONS. TREES AND PLANT MATERIALS SHALL BE EQUAL TO THE MINIMUM REQUIREMENTS OF SPECIES SPECIFIED AND APPROVED MATERIAL DELIVERED TO SITE. SHOULD THE CONDITION DECLINE FROM THE APPROVED SAMPLE THE SUPERINTENDENT RESERVES THE RIGHT TO REJECT THE TREE / PLANTS. FREQUENCY: AS REQUIRED.

PRUNING

SELECTIVE PRUNING MAY BE REQUIRED DURING THE ESTABLISHMENT PERIOD TO PROMOTE A BALANCED CANOPY STRUCTURE. THESE ACTIVITIES SHALL BE CARRIED OUT TO THE BEST HORTICULTURAL AND INDUSTRY PRACTICE. ALL PRUNED MATERIAL IS TO BE REMOVED FROM SITE.

IRRIGATION

A LOW VOLUME DRIP IRRIGATION SYSTEM MAY BE INSTALLED AT THE DISCRETION OF THE DEVELOPER. POSITION OF CONTROL BOX, SOLENOIDS AND IRRIGATION CONDUITS TO BE DESIGNED BY QUALIFIED IRRIGATION ENGINEER AT CC STAGE. CONTROLLERS SHALL BE MOUNTED ON A STABLE WALL, POWER RACK, OR FORMED AND CONSTRUCTED CONCRETE BASED PEDESTAL MOUNT. PERFORMANCE SPECIFICATION TO BE PROVIDED BY LANDSCAPE ARCHITECT. NOMINALLY 25MM DELIVERED TO PLANT AREAS EACH WEEK DURING ESTABLISHMENT (DEPENDING ON WEATHER CONDITIONS). AFTER ESTABLISHMENT, IRRIGATION RATES CAN BE DECREASED IN CERTAIN AREAS OF THE LANDSCAPE DEPENDING ON THE SPECIES.

WATERING

IMPLEMENT AN APPROPRIATE HAND WATERING REGIME IN AREAS NOT IRRIGATED IN ASSOCIATION WITH CURRENT WATERING PROGRAMME TO MAINTAIN PLANT HEALTH AND VIGOUR. THE PROGRAM SHALL REFLECT SEASONAL CONDITIONS AND PLANT SPECIES. FREQUENCY: WEEKLY OR AS REQUIRED.

DRAINAGE

ALL LANDSCAPE AREAS ARE TO HAVE POSITIVE DRAINAGE TO SW SYSTEMS. IF AREAS OF POOR DRAINAGE ARE IDENTIFIED ON SITE THEN THIS SHOULD BE BROUGHT TO THE SITE SUPERINTENDENTS ATTENTION. INSTALL AGG LINES IF REQUIRED.

SOILS

HORIZON A - GARDEN BEDS ON NATURAL GROUND
A SANDY LOAM TO CLAY LOAM TOPSOIL MIX DESIGNED FOR GENERAL PURPOSE. ON-GRADE LANDSCAPE GARDEN BED PLANTING OF GRASSES, WOODY AND HERBACEOUS ANNUALS AND PERENNIALS THAT HAVE HIGH NUTRIENT REQUIREMENT FOR SUSTAINED OPTIMUM GROWTH, AND ARE NOT SUBJECT TO COMPACTION BY PEDESTRIAN AND OTHER FOOT TRAFFIC. HEAVIER TEXTURED SOILS IN THIS SPECIFICATION MAY REQUIRE ENGINEERED SOLUTIONS WHERE EXCESSIVE WETNESS IS ANTICIPATED. NOTE THAT ORGANIC SOIL VARIANT SHOULD NOT BE CHOSEN FOR LOW P PLANTINGS AND SHOULD NOT BE USED

BELOW 300MM. PLANTING METHODS INCLUDE DIRECT SEEDING, TUBE AND POTTED SPECIMENS UP TO 45L

HORIZON B - LARGER POTTED PLANTING BELOW 300MM
A SANDY, WELL DRAINED MEDIUM WITH LOW ORGANIC MATTER FOR BACKFILLING BELOW 300MM FROM THE SURFACE IN LARGER POTTED SPECIMENS OVER 45L OR 400MM DEPTH OF ROOT BALL. SEMI-ADVANCED, ADVANCED AND SUPER ADVANCED TREE PLANTING. THE SPECIFICATION MAY USE A SMALL PROPORTION OF SITE WON TOPSOIL OR SUBSOIL, PROVIDED THE ORGANIC MATTER UPPER LIMIT IS NOT EXCEEDED.

CULTIVATION

ALL GARDEN BEDS TO BE CULTIVATED TO A MIN DEPTH OF 150MM AND TREE PITS TO THE DEPTH OF THE ROOT BALL. ONLY. IF ADDITIVES SUCH AS GYPSUM ARE REQUIRED CONDUCT THIS AFTER CULTIVATION INTO THE TOP 100MM OF SOIL.

PLANTING

ALL PLANTING TO BE GROWN TO NATSPEC SPECIFICATIONS. CONTRACTOR TO PREPARE SITE FOR PLANTING INCLUDING WATERING, HANDLING, SETTING OUT AND EXCAVATION. EXCAVATE A HOLE FOR EACH PLANT LARGE ENOUGH TO PROVIDE NOT LESS THAN 100MM ALL AROUND THE ROOT SYSTEM OF THE PLANT. FOR TREE PLANTING EACH HOLE SHALL BE DUG WITH A SHOVEL, BACKHOE OR SIMILAR TOOL. INDIVIDUAL HOLES SHALL BE EXCAVATED TO ALLOW ROOT SYSTEM TO SIT FLAT ON THE EXCAVATED HOLE AND 400MM TO EACH SIDE OF THE ROOT SYSTEM. BACKFILL PLANTING HOLES WITH EXISTING SITE SOIL AND TOPSOIL AS DESCRIBED IN SECTION 'SOIL'. PLANT / TREE SHALL BE SET PLUMB, WITH THE ROOT BALL SET SLIGHTLY BELOW THE FINAL SOIL LEVEL.

MULCHING

THE LANDSCAPE CONTRACTOR SHALL SUPPLY AND INSTALL 10MM PINE BARK MULCH TO ALL GARDEN BEDS SHOWN ON THE LANDSCAPE PLANS, TO A MINIMUM DEPTH OF 75MM. ALL MULCH IS TO BE FREE OF DELETERIOUS MATTER SUCH AS SOIL, WEEDS AND STICKS. MULCHED SURFACES ARE TO BE KEPT CLEAN AND TIDY AND FREE OF ANY DELETERIOUS MATERIAL AND FOREIGN MATTER. REINSTATE DEPTHS TO A UNIFORM LEVEL OF 75MM WITH MULCH AS SPECIFIED. MULCH TO BE FREE OF ANY WOOD MATERIAL IMPREGNATED WITH CCA OR SIMILAR TOXIC TREATMENT. MAINTAIN WATERING RINGS AROUND TREES. TOP UP MULCH LEVELS PRIOR TO HANDOVER TO CLIENT.

TURFING

THE LANDSCAPE CONTRACTOR SHALL SUPPLY AND INSTALL SAPHIRE BUFFALO TURF IN STRETCHER PATTERN TO ALL TURF AREAS SHOWN ON THE LANDSCAPE PLANS AND IS TO FINISH FLUSH WITH ADJACENT SURFACES. TURF TO BE A MIN THICKNESS OF 50MM WITH A 40MM MOWING HEIGHT. CONTRACTOR TO ALLOW FOR FERTILISING, LAYING, TAMPING, WATERING, TOP DRESSING, MAINTENANCE AND MOWING. THE LANDSCAPE CONTRACTOR SHALL SUPPLY AND INSTALL TURF UNDERLAY UNDER ALL TURF AREAS, CONSISTING OF 100MM THICK LAYER OF SCREENED TOP SOIL.

PEST AND DISEASE CONTROL

THE LANDSCAPE CONTRACTOR SHALL SPRAY FOR PESTS AND DISEASE INFESTATIONS WHEN THE PEST AND FUNGAL ATTACK HAS BEEN POSITIVELY IDENTIFIED AND WHEN THEIR POPULATIONS HAVE INCREASED TO A POINT THAT WILL BECOME DETRIMENTAL TO PLANT GROWTH. APPLY ALL PESTICIDES TO MANUFACTURER'S DIRECTIONS. FREQUENCY: WEEKLY INSPECTION

FERTILISING

PELLETS SHALL BE IN THE FORM INTENDED TO UNIFORMLY RELEASE PLANT FOOD ELEMENTS FOR A PERIOD OF APPROXIMATELY NINE MONTHS EQUAL TO SHIRLEYS KOKEI PELLETS, ANALYSIS 6.3:1.8:2.9 OR SIMILAR APPROVED. KOKEI PELLETS SHALL BE PLACED AT THE TIME OF PLANTING TO THE BASE OF THE PLANT, 50MM MINIMUM FROM THE ROOT BALL AT A RATE OF TWO PELLETS PER 300MM OF TOP GROWTH TO A MAXIMUM OF 8 PELLETS PER TREE. GENERALLY CHECK FOR SIGNS OF NUTRIENT DEFICIENCIES (YELLOWING OF LEAVES, FAILURE TO THRIVE), AND ADAPT FERTILISER REGIME TO SUIT. FERTILISER SHOULD BE APPLIED AT THE BEGINNING AND THE END OF THE (SUMMER) GROWING SEASON.

MAINTENANCE SCHEDULE

	JAN	FEB	MAR	APR	MAY	JUN	JUL	AUG	SEP	OCT	NOV	DEC
INSPECTIONS	2M		2M		2M		2M		2M		2M	
WATERING	W	W	W	W	W	W	W	W	W	W	W	W
WEED AND PEST MANAGEMENT	AR	AR	AR	AR	AR	AR	AR	AR	AR	AR	AR	AR
LITTER REMOVAL	2M		2M		2M		2M		2M		2M	
REMOVAL OF DEAD/DYING TREE LIMBS	2M		2M		2M		2M		2M		2M	
PLANT REPLACEMENT IF REQUIRED	AR	AR	AR	AR	AR	AR	AR	AR	AR	AR	AR	AR
MULCHING	AR	AR	AR	AR	AR	AR	AR	AR	AR	AR	AR	AR
TREE STAKE ADJUSTMENTS	AR	AR	AR	AR	AR	AR	AR	AR	AR	AR	AR	AR
FERTILISING	AR	AR	AR	AR	AR	AR	AR	AR	AR	AR	AR	AR
PLANTING ESTABLISHMENT PERIOD - 12 MONTHS												
LANDSCAPE MATERIAL ESTABLISHMENT - 12 MONTHS												
KEY W-WEEKLY, 2M- EVERY TWO MONTHS, AR- AS REQUIRED												
THE CONTRACTOR IS TO ALLOW 52 WEEKS PLANTING ESTABLISHMENT PERIOD FROM THE DATE OF PRACTICAL COMPLETION. CONTRACTOR TO MAINTAIN A LOG BOOK TO KEEP A RECORD OF MAINTENANCE EVERY MONTH. REPLACEMENTS OF FAILED, DAMAGED OR STOLEN PLANTS TO BE CARRIED OUT DURING THE MAINTENANCE PERIOD. IRRIGATION SYSTEMS TO BE INSTALLED AND MAINTAINED DURING THE MAINTENANCE PERIOD. LANDSCAPE MAINTENANCE REPORT SHALL BE SUBMITTED TO THE PRINCIPLE CERTIFYING AUTHORITY BY THE CONTRACTOR.												

ISSUE	DATE	DESCRIPTION	DRAWN	CHECKED
A	03.12.24	ISSUE FOR COORDINATION	AG	RL
B	05.12.24	ISSUE FOR COORDINATION	AG	RL
C	19.12.24	100% SCHEMATIC	AG	RL
D	23.01.25	ISSUE FOR PCG COORDINATION	AG	RL
E	28.03.25	ISSUE FOR TENDER	QN	RL